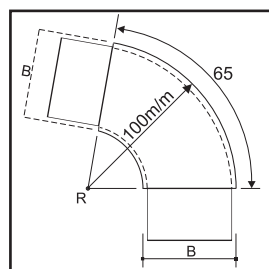
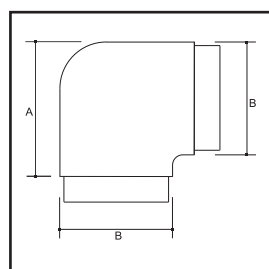


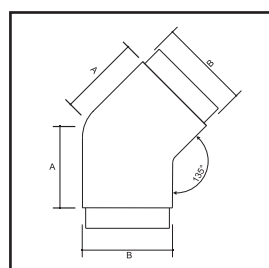
(2001E) B50,8mm x A66,7mm



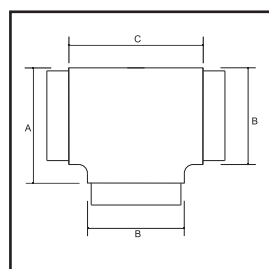
(2001EL) B50,8mm x A101,60mm



(2002E) B50,8mm x A44,9mm

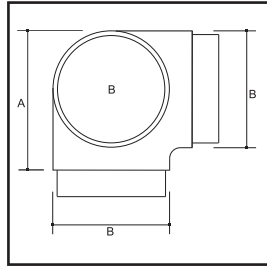


(2003E) B50,8mm x A57,15mm

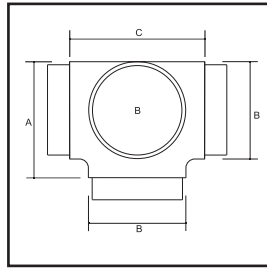


(2005E) B50,8mm x A57,15mm x C66,7mm

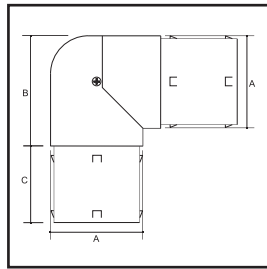
Materiał stal nierdzewna gat. ASI 304,316. Wykończenie poler lub satyna.



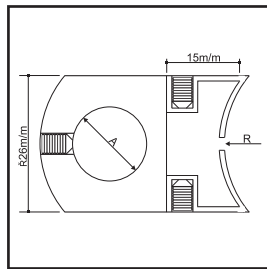
(2006E) B50,8mm x A57,15mm



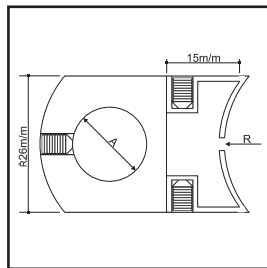
(2008E) B50,8mm x A57,15mm x C66,7mm



(349E) A50,8mm x B57,15mm x C83mm

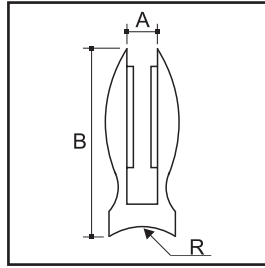
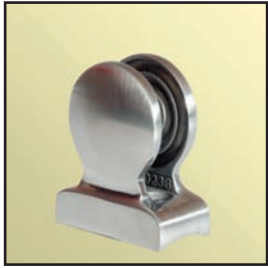


(0474A R38) A12,7mm x R38mm
(0474A R50) A12,7mm x R50,8mm

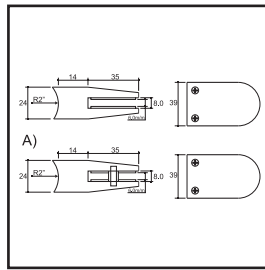


(0474B R38) A12,7mm x R38mm
(0474B R50) A12,7mm x R50,8mm

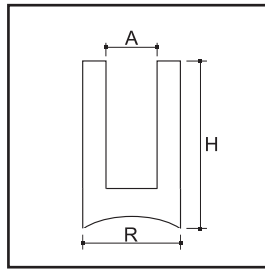
Materiał stal nierdzewna gat. ASI 304,316. Wykończenie poler lub satyna.



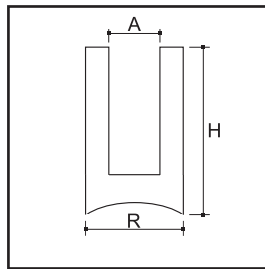
(1523A) R38mm x A8,10,12mm x H50,8mm
(2023A) R50mm x A8,10,12mm x H50,8mm
(2523A) R63,5mm x A8,10,12mm x H50,8mm
(0023A) R00mm x A8,10,12mm x H50,8mm



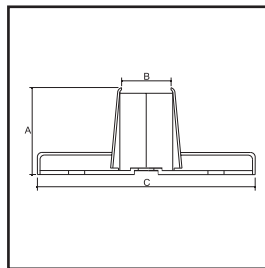
(2086) R50,8mm x H49mm x A6,8mm



(2050) R50,8mm x H50mm x A8,10,12mm

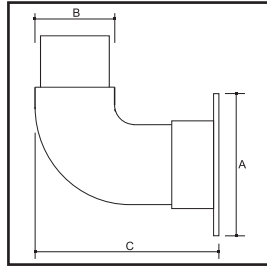


(2045) R50,8mm x H45mm x A8,10,12mm

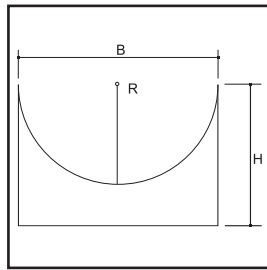


(1599A) B38mm x A44,90mm x C82,55mm
(2099A) B50,8mm x A50,8mm x C101,6mm

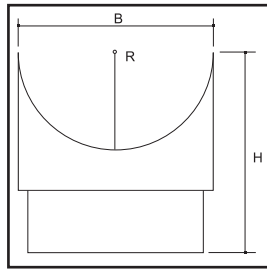
Materiał stal nierdzewna gat. AISI 304,316. Wykończenie poler lub satyna.



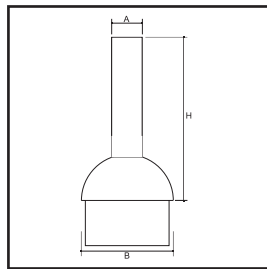
(1524A) B38mm x A76,2mm x C88,9mm
(2024A) B50,8mm x A101,6mm x C95,7mm



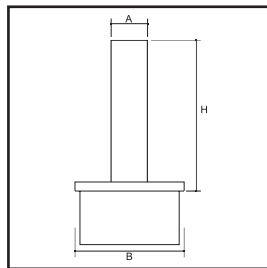
(313) B 38mm x R50,8mm
(313) B 38mm x R38mm
(313) B 50,8mm x R50,8mm



(1527) B38mm x R38mm x H57,5mm
(1527) B38mm x R50,8mm x H57,5mm
(2027) B50,8mm x R50,8mm x H57,5mm

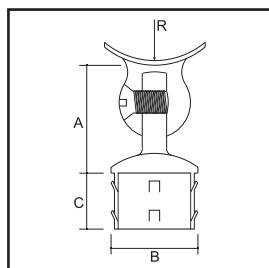


(1512A) B38mm x A25,4mm x H88,9mm



(2022A) B50,8mm x A25,4mm x H88,9mm

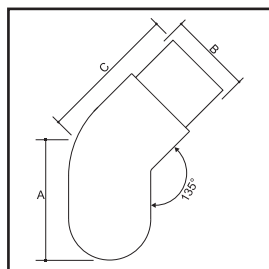
Materiał stal nierdzewna gat. AISI 304,316. Wykończenie poler lub satyna.



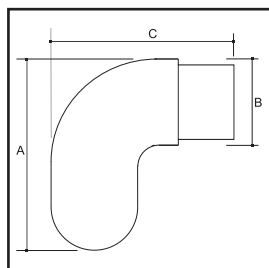
(315) B25,4mm x R50,8mm x A31,75mm

(315) B38mm x R50,8mm x A44,90mm

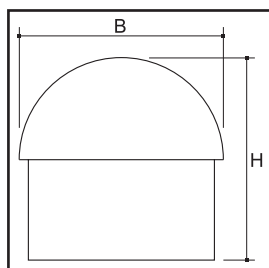
(315) B50,8mm x R50,8mm x A50,8mm



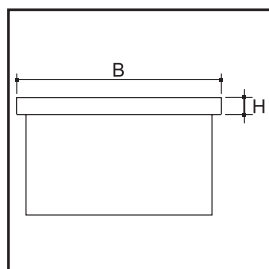
(2025A) B50,8mm x A70,3mm x C70,3mm



(2026A) B50,8mm x A88,9mm x C88,9mm

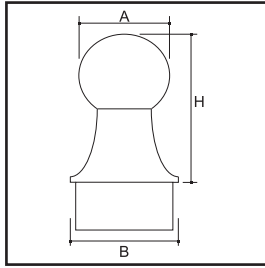


(2018A) B50,8mm x H 25,4mm

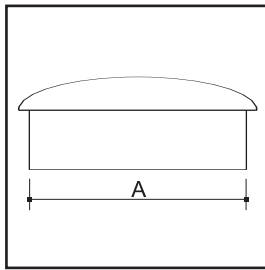


(2019A) B50,8mm x H 4mm

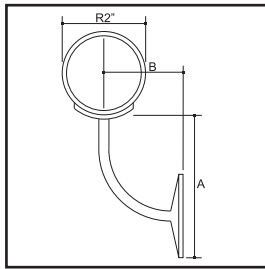
Materiał stal nierdzewna gat. ASI 304,316. Wykończenie poler lub satyna.



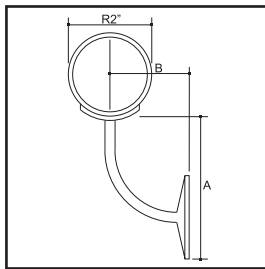
(2021A) B50,8mm x A50,8mm x H76,2mm



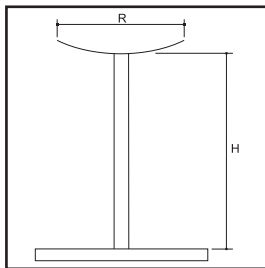
(1530A) A 38mm
(2030A) A 50,8mm



(1528A) R38mm x A95,7mm x B63,5mm
(2029A) R00mm x A63,5mm x B63,5mm
(2028A) R50,8mm x A95,7mm x B63,5mm

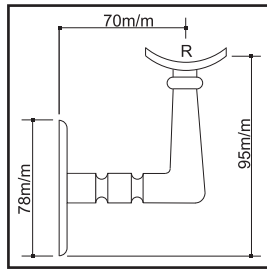


(50831A) R50,8mm x A95,7mm x B63,5mm

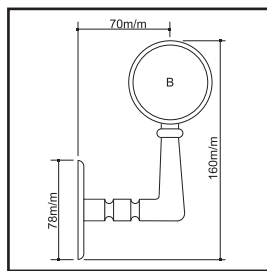


(2028P) R50,8mm x H100mm
(1528P) R38mm x H100mm

Materiał stal nierdzewna gat. ASI 304,316. Wykończenie poler lub satyna.

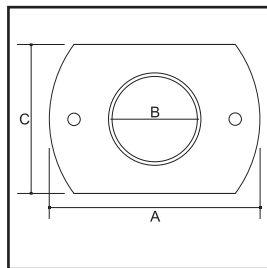


(2031) R50,8mm



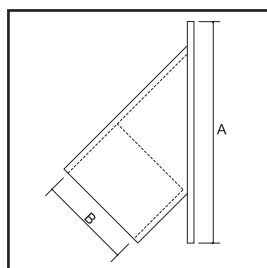
(2034L) B50,8mm

(2035P) B50,8mm

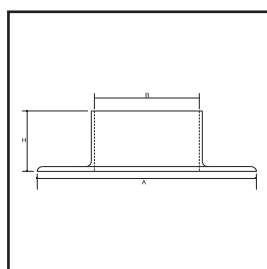


(2014A)

B50,8mm x A101,6mm x C70,3mm x H31,75mm



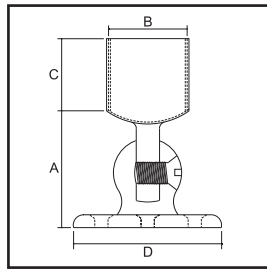
(2015A) B50,8mm x A114,3mm



(1516A) B38mm x A76,2mm x H25,4mm

(2016A) B50,8mm x A101,6mm x H31,75mm

Materiał stal nierdzewna gat. ASI 304,316. Wykończenie poler lub satyna.

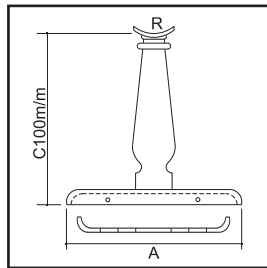


(315AC)

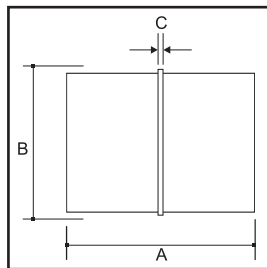
B38mm x A38mm x C20mm x D76,2mm

(315AC)

B50,8mm x A50,8mm x C25,4mm x D101,6mm

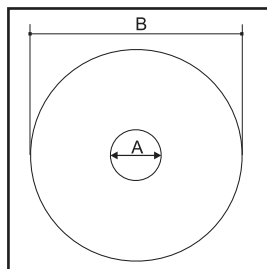
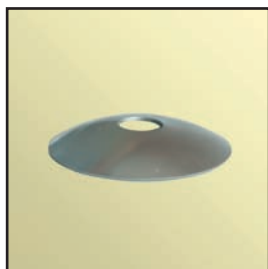


(2041) R 50,8mm



(1504E) B38mm x A50,8mm x C3,18mm

(2004E) B50,8mm x A 53,98mm x C3,18mm



rozeta maskująca rury A 12,4mm x B 50mm

Materiał stal nierdzewna gat. ASI 304,316. Wykończenie poler lub satyna.